

Installation Instructions Automatic ignition for S4 Turbo



Translation of the original German installation instructions for technicians

Read and follow the instructions and safety information!

Technical changes, typographical errors and omissions reserved!

M1000417_en | Edition 24/10/2017



1 General

The S4 Turbo firewood boiler can be equipped with an ignition expansion.

Before modifications:

- ☐ Switch boiler off and allow it to cool down
- ☐ Switch off the power supply to the boiler

CAUTION



Assembly and installation by untrained personnel:

Risk of personal injury and damage to property.

During assembly and installation:

- ☐ Observe the instructions and information in the manuals
 - ☐ Only allow trained staff to carry out assembly and installation
- ☐ In addition to these instructions, please also note the warnings in the operating/ installation manual for the boiler

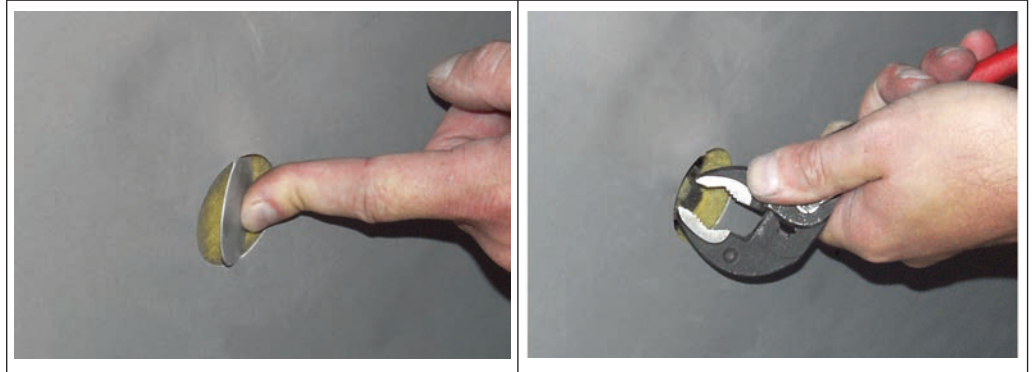
1.1 Materials supplied



1	Ignition fan with connection cable	2	Cover for ignition fan
3	Igniter tube	4	Clamp
5	4x M3x10 screws for attaching the board	6	LTC 2004 ignition expansion board with ribbon cable

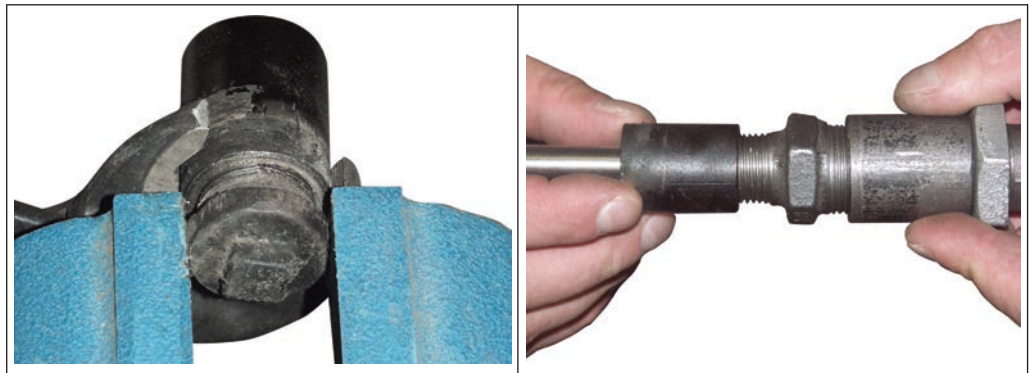
2 Assembly

On the actuator side:

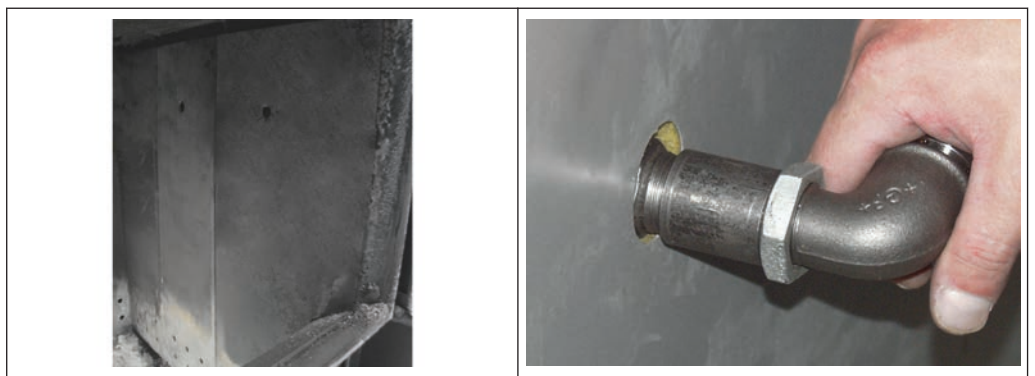


- ☐ Break off the pre-stamped cutout by moving it repeatedly back and forth
- ☐ Unscrew the blind plug with pliers
- ☐ File rough edges using a half-round file and remove burrs

If the extension sleeve was unscrewed along with the blind plug:



- ☐ Clamp the blind plug and unscrew the extension sleeve
- ☐ Fit the extension sleeve on the igniter tube



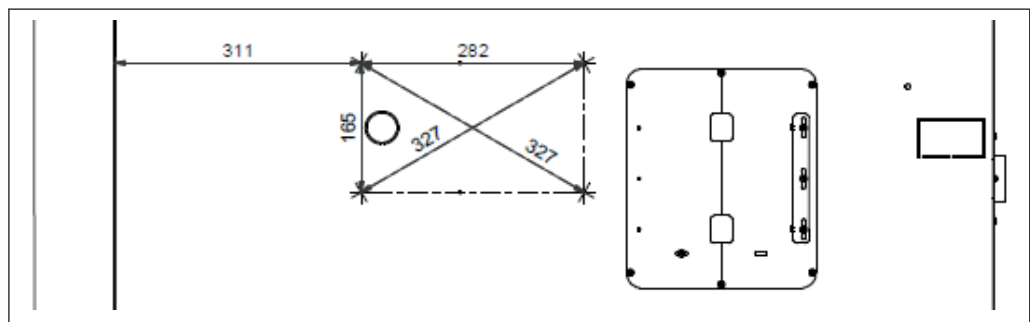
- ☐ Remove the front combustion chamber guard on the side the ignition is to be fitted
- ☐ Screw in the igniter tube fully and refit the combustion chamber guard



NOTICE! The igniter tube must protrude approx. 0.5 to 1 cm over the combustion chamber guard.



- ☐ Attach the ignition fan and fix with clamp
- ☐ Attach connection cable to ignition fan



- ☐ If there are no holes yet at the back, use the hole pattern to create them



- ☐ Fit the cover on the holes with 4 self-tapping screws

2.1 Electrical wiring



DANGER

When working on electrical components:

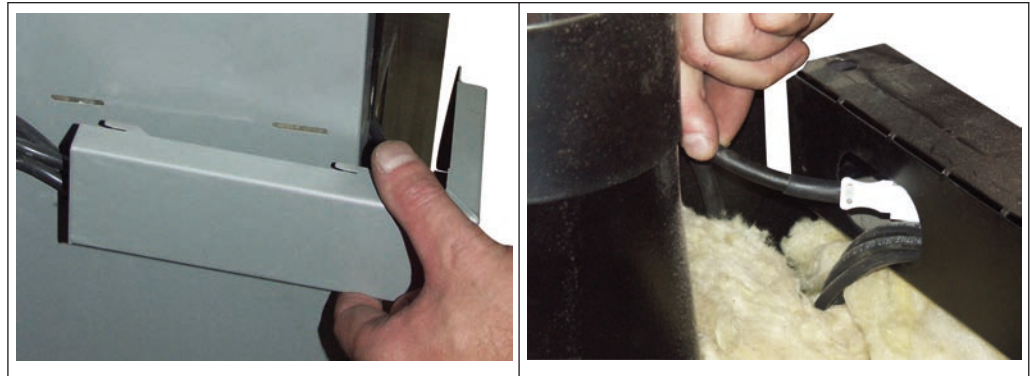
Risk of electrocution!

When work is carried out on electrical components:

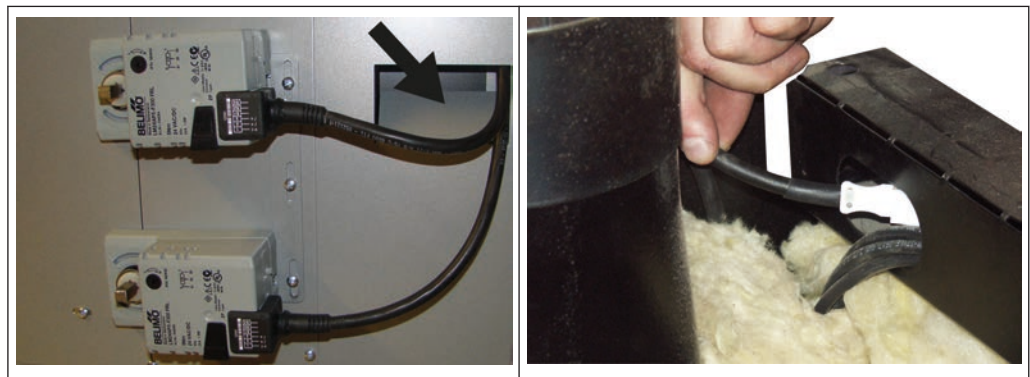
- ☐ Only have work carried out by a qualified electrician
- ☐ Observe the applicable standards and regulations
 - ➔ Work must not be carried out on electrical components by unauthorised persons



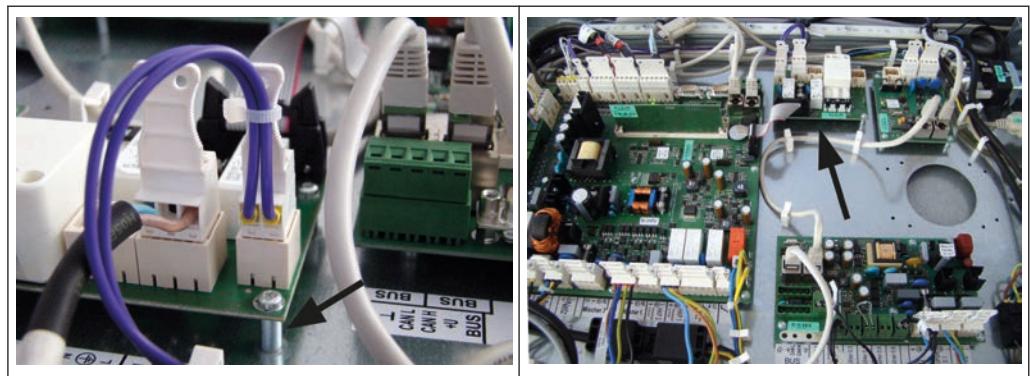
- ☐ Remove the back insulating cover
- ☐ Remove the controller cover

Version 1 (fitted cable duct):

- ☐ Remove the rear cable duct
- ☐ Loosen the insulating back panel and run the connection cable of the ignition fan behind the sheet with the actuator cables to the controller box

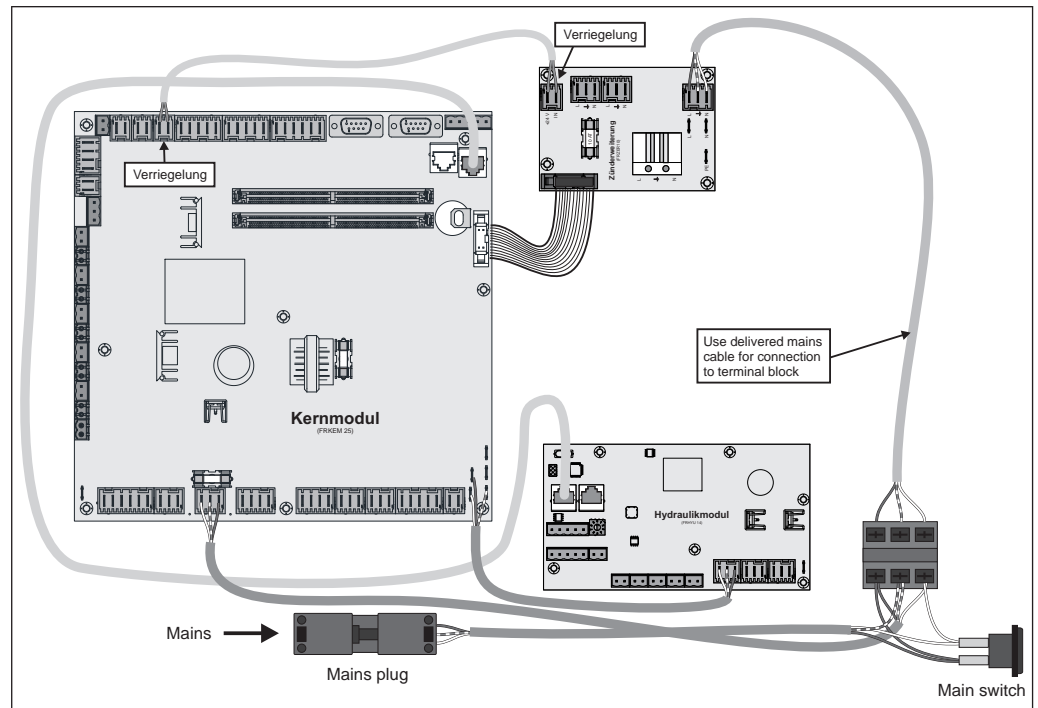
Version 2 (integrated cable duct):

- ☐ Insert the connection cable of the ignition fan into the integrated cable duct and run it to the controller box with the actuator cables.



- ☐ Fit the board at the spacers provided using 4 M3x10 screws

Connecting the ignition expansion to the boiler controller



- ☐ Connect the provided mains cable provided to "Versorgung Kernmodul" and use mains cable for connection to terminal block
- ☐ Connect the ribbon cable provided to the "optional module" port on the core module
- ☐ Connect the connection cable (purple) of the ignition expansion to the "lock" port on the core module
- ☐ Once you have finished wiring the ignition expansion, replace the back insulating cover and the controller cover
- ☐ If the model has a fitted cable duct, secure the insulating back panel and the cable duct again
- ☐ Only then should you switch on the power supply to the boiler
- ☐ Finally set the parameters for the automatic ignition in the boiler controller

NOTICE! See operating instructions for boiler controller