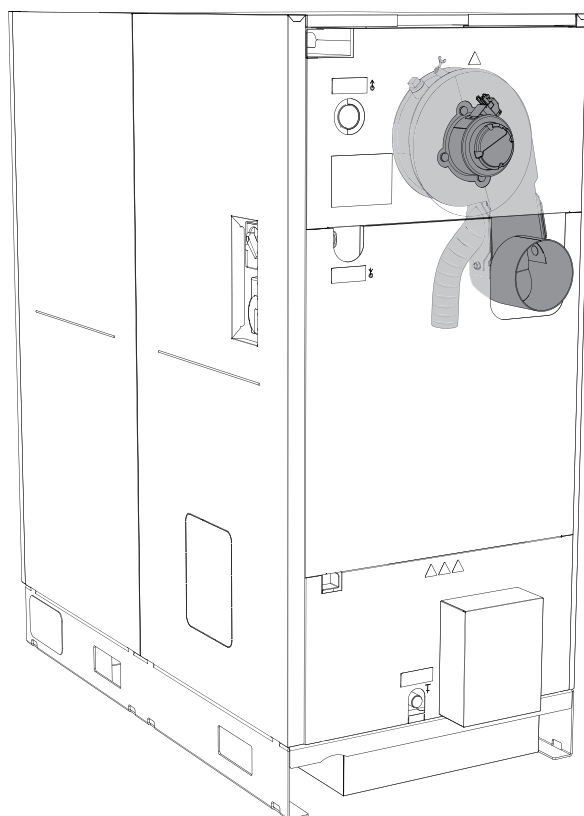


## Flue gas pipe connection

PE1e Pellet 45-60



Translation of original German version of installation instructions for technicians.

Read and follow all instructions and safety instructions.  
All errors and omissions excepted.

# 1 General

The flue gas pipe connection on the pellet boiler PE1e Pellet 45-60 can be converted to the rear.

## Before conversion:

- ☐ Switch off the boiler and allow it to cool down
- ☐ Switch off the power supply to the boiler

## CAUTION



Assembly and installation by untrained personnel:

***Risk of personal injury and damage to property.***

During assembly and installation:

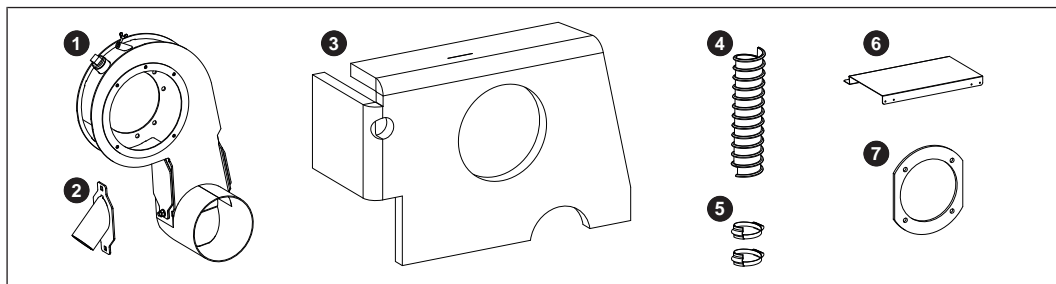
- ☐ Observe the instructions and information in the manuals
- ☐ Only allow trained staff to carry out assembly and installation

- ☐ In addition to these instructions, please also note the warning and safety instructions in the operating/installation manual for the boiler.



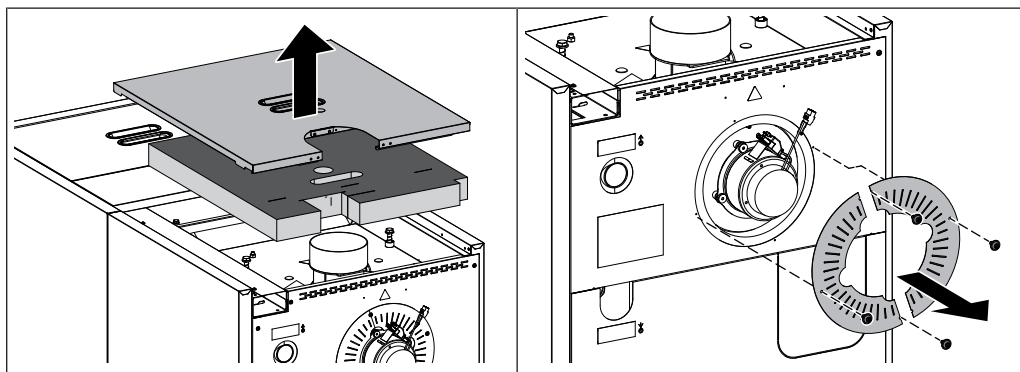
**NOTICE!** The boiler components removed in the course of assembly and no longer required must be disposed of in an environmentally friendly manner in accordance with the country-specific regulations.

## 1.1 Materials supplied

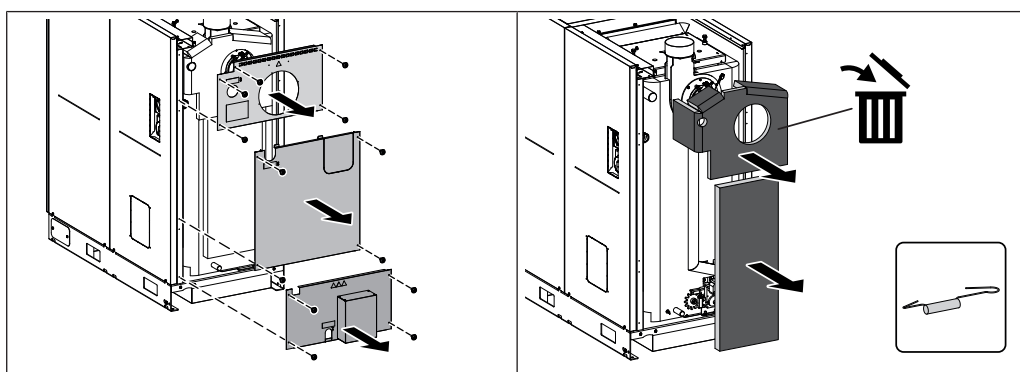


1	Induced draught unit housing with seal	5	Spiral clamp (2 units)
2	Suction flange	6	Cover plate
3	Thermal insulation for induced draught unit housing	7	Seal for induced draught unit housing
4	Air hose (length approx. 270 mm)		

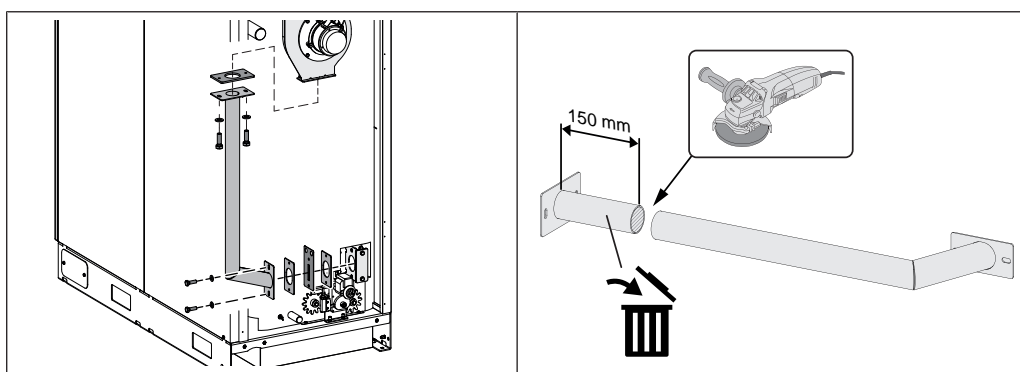
## 2 Assembly



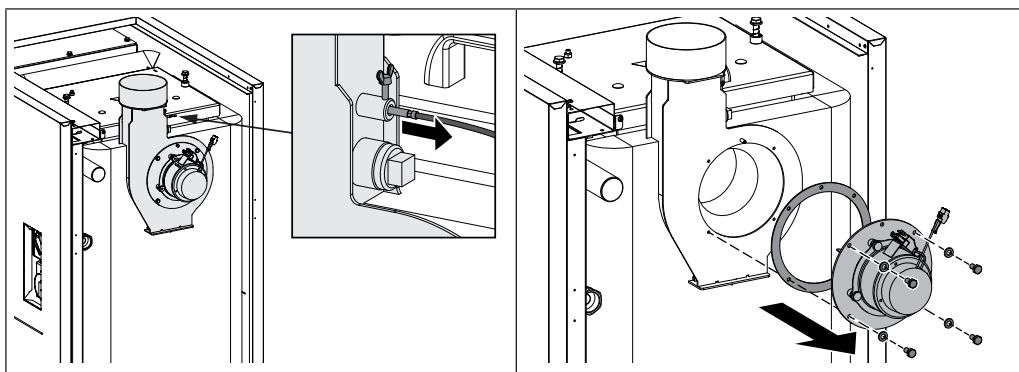
- ☐ Remove rear cover and thermal insulation
- ☐ Remove cover plates for ID fan



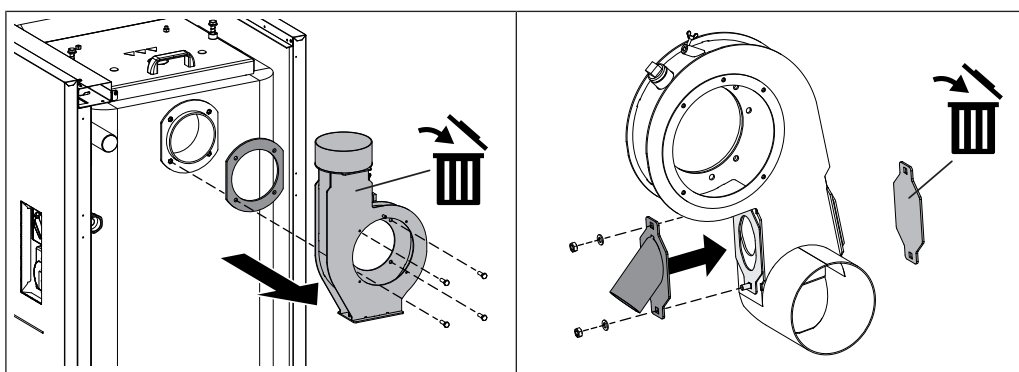
- ☐ Remove the back panels
- ☐ Unhook tension springs on thermal insulation of the induced draught unit housing and FGR duct
- ☐ Remove thermal insulation
  - ↳ Thermal insulation of the induced draught unit housing is no longer required



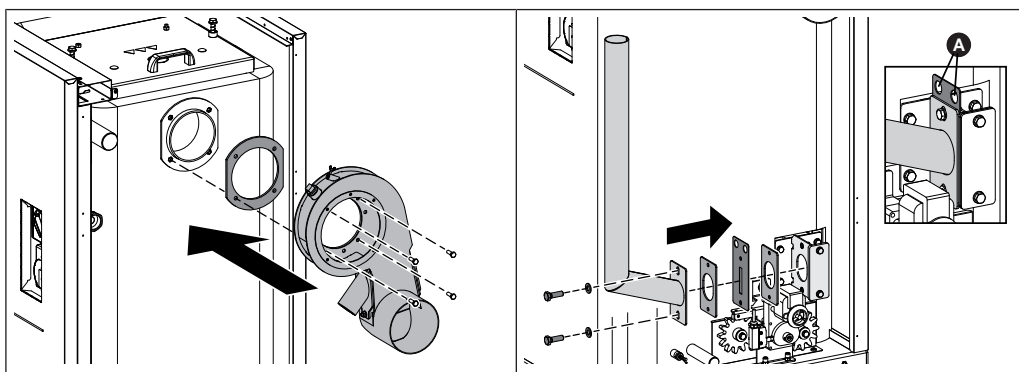
- ☐ Remove FGR duct
- ☐ Shorten the FGR duct on the upper flange by 150 mm
  - ↳ Upper part is no longer required



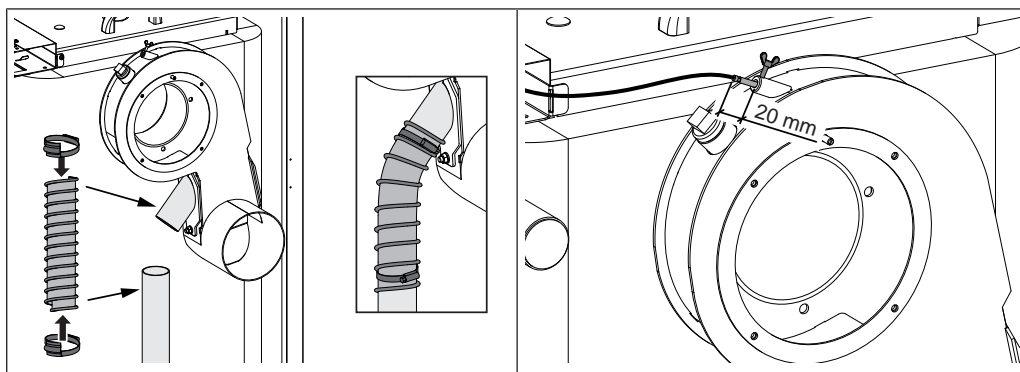
- ☐ Loosen wing screw on the induced draught unit housing
- ☐ Pull out flue gas temperature sensor
- ☐ Disconnect and remove induced draught unit fan



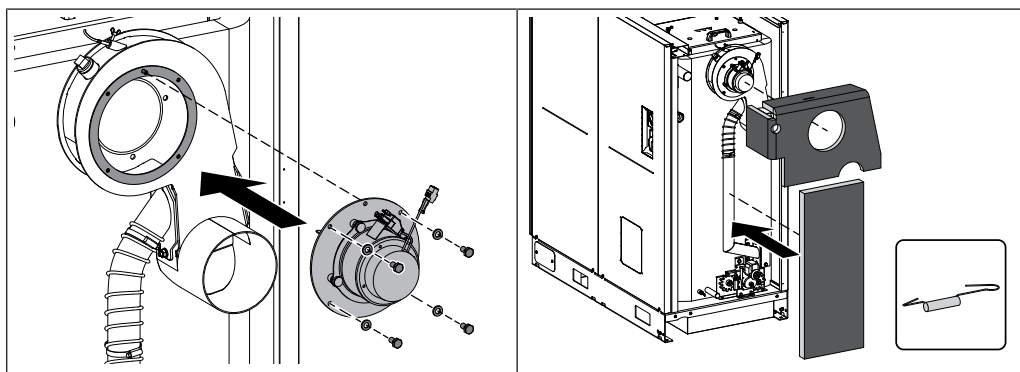
- ☐ Remove the induced draught unit housing and seal
  - ↳ Induced draught unit housing is no longer required
- ☐ Replace the blanking plate on the left side of the supplied induced draft housing with the suction flange.
  - ↳ Blanking plate is no longer required



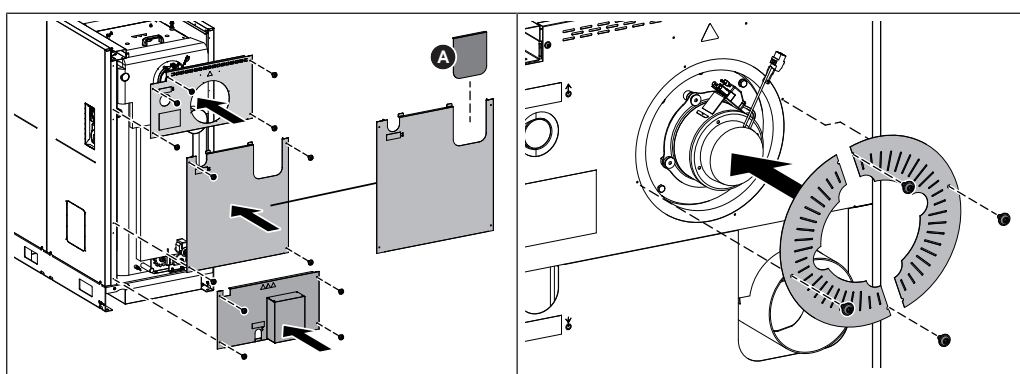
- ☐ Install induced draught unit housing and seal on the boiler
- ☐ Fit the shortened FGR duct incl. seals and air-reducing screen to the lower connection.
  - ↳ Position the air reducing screen between the seals so that the round cut-outs (A) protrude upwards.



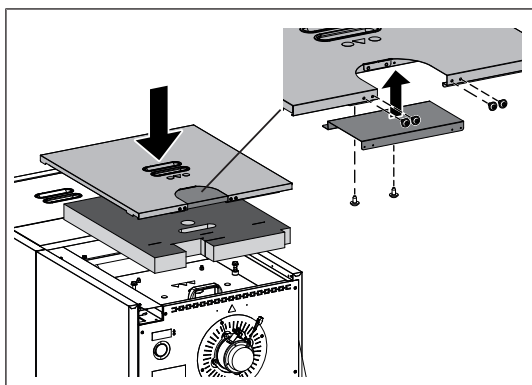
- ☐ Push the spiral clamps on the air hose
- ☐ Push air hose onto FGR duct and intake flange and fix with spiral clamps
- ☐ Push the flue gas temperature sensor in so that it protrudes approx. 20 mm from the sleeve
- ☐ Secure flue gas temperature sensor with wing screw



- ☐ Fit the induced draught unit fan
  - ↳ Seal already stuck on the induced draught unit housing
- ☐ Secure thermal insulation on the induced draught unit housing and FGR duct with clamping springs

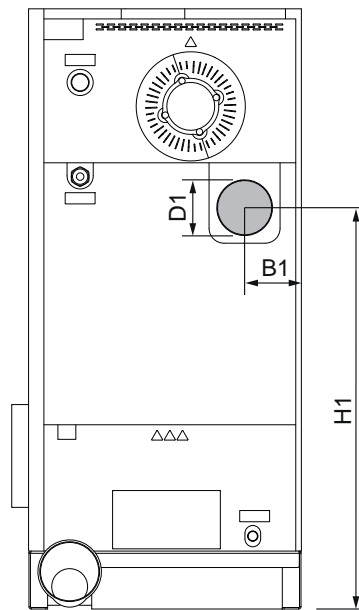


- ☐ Remove the pre-perforated area (A) on the central back panel
- ☐ Deburr sharp edges using a half-round file
- ☐ Install back panels starting from the bottom
- ☐ Install the induced draught cover plates
- ☐ Connect the plug to the induced draught unit fan



- ☐ Install the cover plate on the inside of the cover
- ☐ Place thermal insulation and cover on the boiler

### 3 Flue gas pipe connection



Item	Description	Unit	Value
<b>B1</b>	Clearance flue gas pipe connection to side of boiler	mm	150
<b>H1</b>	Height, flue gas pipe connection		1090
<b>D1</b>	External diameter of the flue gas pipe connection		149

☐ Connect the connection line to the chimney

**NOTICE!** Configure the connection line according to the specifications in the installation/operating manual of the boiler

## Manufacturer's address

### Fröling Heizkessel- und Behälterbau GesmbH

Industriestraße 12  
A-4710 Grieskirchen  
+43 (0) 7248 606 0  
info@froeling.com

### Zweigniederlassung Aschheim

Max-Planck-Straße 6  
85609 Aschheim  
+49 (0) 89 927 926 0  
info@froeling.com

### Froling srl

Via J. Ressel 2H  
I-39100 Bolzano (BZ)  
+39 (0) 471 060460  
info@froeling.it

### Froling SARL

1, rue Kellermann  
F-67450 Mundolsheim  
+33 (0) 388 193 269  
froling@froeling.com

## Installer's address

Stamp

## Froling customer services

Austria  
Germany  
Worldwide

0043 (0) 7248 606 7000  
0049 (0) 89 927 926 400  
0043 (0) 7248 606 0



[www.froeling.com](http://www.froeling.com)

**froling** 